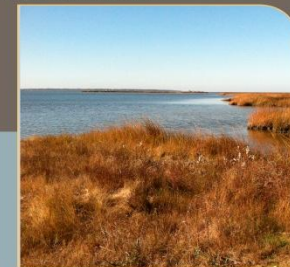


# Outer Banks Event Site Final Plan Recommendation



Photos above from [outerbanksseafoodfestival.org](http://outerbanksseafoodfestival.org) & [obxconnection.com](http://obxconnection.com)



Presented by



October 8, 2013

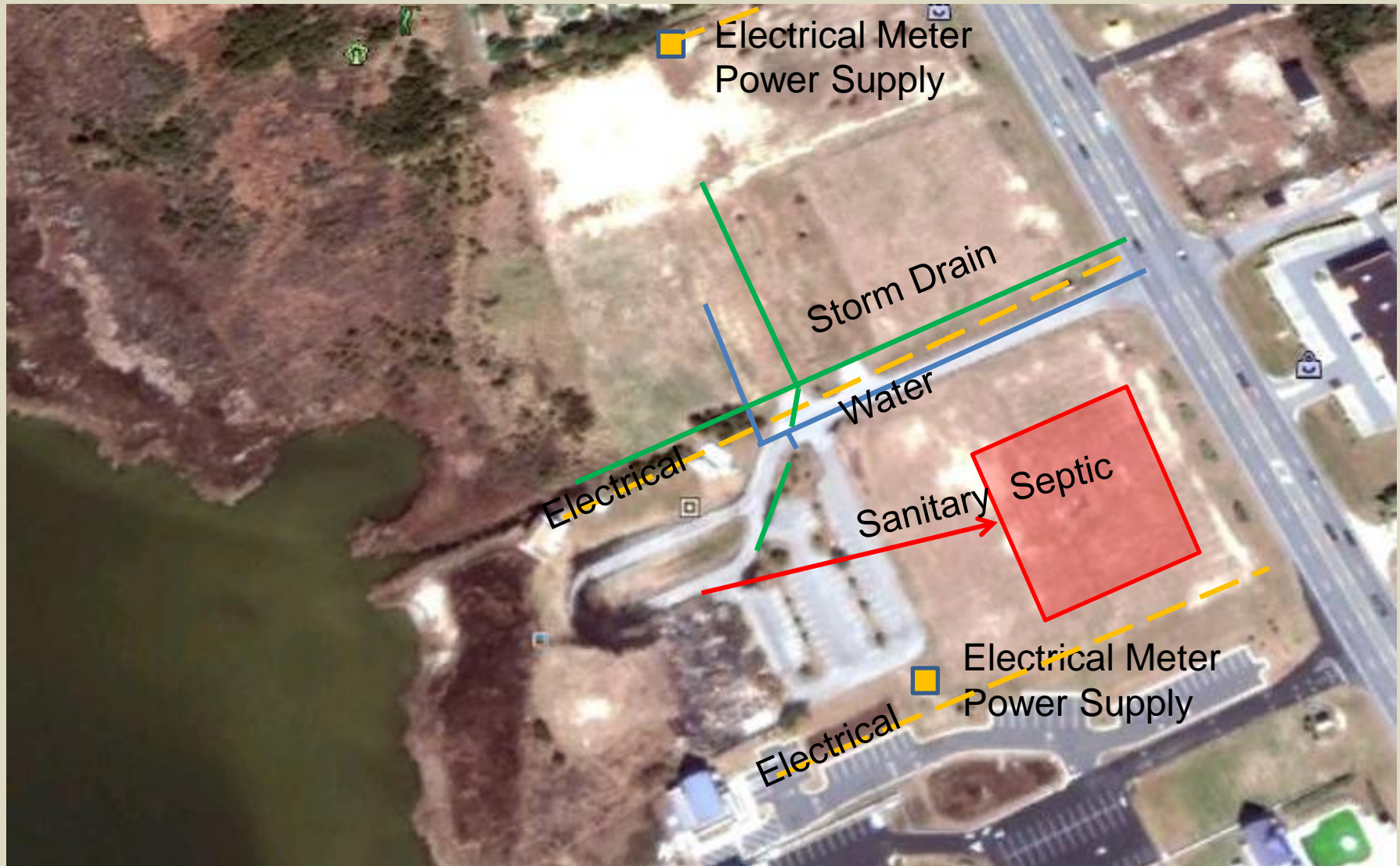
## Project Process

- Data collection and base mapping
- Site visit and planning worksession
- Alternatives development and refinement
- Public meeting #1
- Final plan revision
- **Board Review**
- Public meeting #2

## Public Comment

- *Maintain 'view windows' to the Sound from the highway corridor*
- *Do not duplicate program with other regional venues*
- *Maximize flexibility*
- *Provide additional parking*
- *Provide additional restrooms*
- *Provide a simple year-a-round Pavilion that can be weatherized*
- *Provide access to event area for service and vendor vehicles*

## Existing Utilities





## Pre Comment Framework





## Post Comment Framework





# Outer Banks Event Site

## Pre Comment - Alternative 2



Birdseye Looking NE

Event Area	3.5 ac.
Amphitheater	1.4 ac.
Permanent Parking	130 spaces
Temporary Parking	160 spaces
Walks and Pathway	5000 lin. ft.
Boardwalk	1150 lin. ft.



North Entrance / Service Drive



# Outer Banks Event Site

## Pre Comment - Alternative 3



Birdseye Looking NE

Event Area	3.8 ac
Amphitheater	.7 ac
Permanent Parking	85 spaces
Temporary Parking	160 spaces
Walks and Pathway	4560 lin.ft.
Boardwalk	2010 lin. ft.



Section A-A



Section B-B



## Post Comment - Alternative 2A



Birdseye Looking NE

North Event Areas	3.2 ac.
South Event Area	1.1 ac.
Permanent Parking	144 spaces
Temporary Parking	320 spaces
Walks and Pathway	5500 lin. ft.
Boardwalk	1050 lin. ft.



Main Entrance

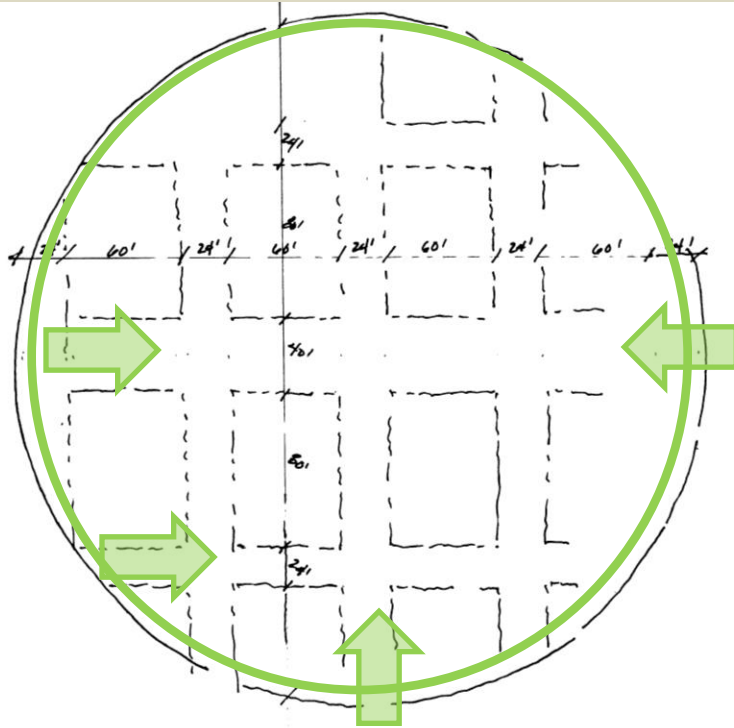


## Master Plan





## Event Layout





# Master Plan – View looking Northwest





# Master Plan – View looking Northwest





## Main Entrance



**Daily View**



**With Event Activity**



## Main Entrance Pavilion



**Daily View**



**With Event Activity**

## Event Pavilion looking toward Sound



**Daily View**



**With Event Activity**



## South Event site looking to Entrance Pavilion



**Daily View**



**With Event Activity**

## Northwest corner of site looking Southeast



**Daily View**



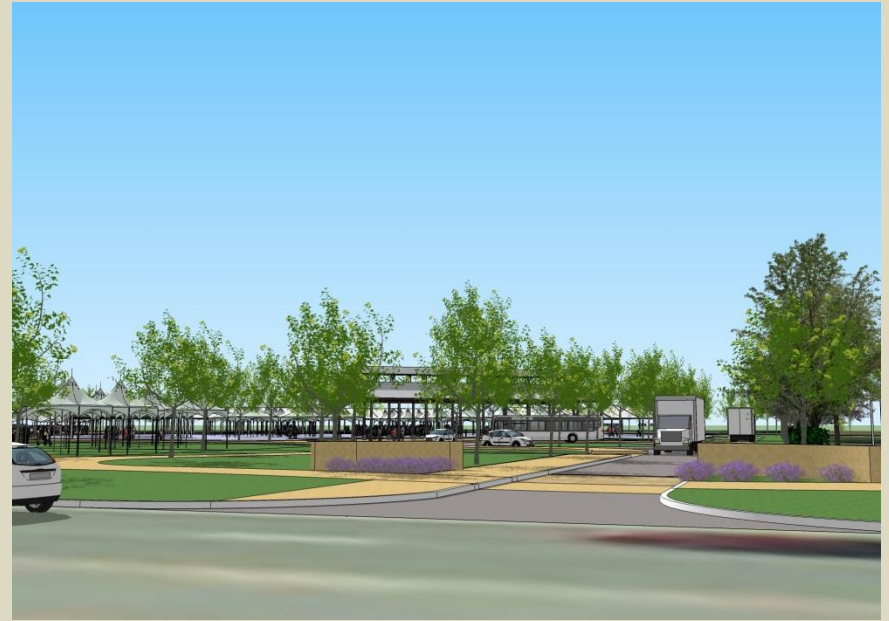
**With Event Activity**



## North Entrance



**Daily View**



**With Event Activity**

## Alternative Approach to Shed





## Implementation Approach





# Outer Banks Event Site

